



THE UNIVERSITY OF  
**CHICAGO**  
MEDICINE

# Statistical Modeling of Clinical Data: the Clinical Research Data Warehouse (CRDW)

Julie Johnson, MPH, RN  
Senior Healthcare Business Analyst

February 1, 2018

# Disclaimer and Permissions

- This educational activity is being presented without the provision of commercial support and without bias or conflict of interest from the planners and presenters.
- The purpose of these materials is to provide insight into the CRDW and internal funding opportunities related to CRI services but is not meant to be exhaustive of all programmatic details.
- It is not permissible to share these materials outside of UCM or the BSD

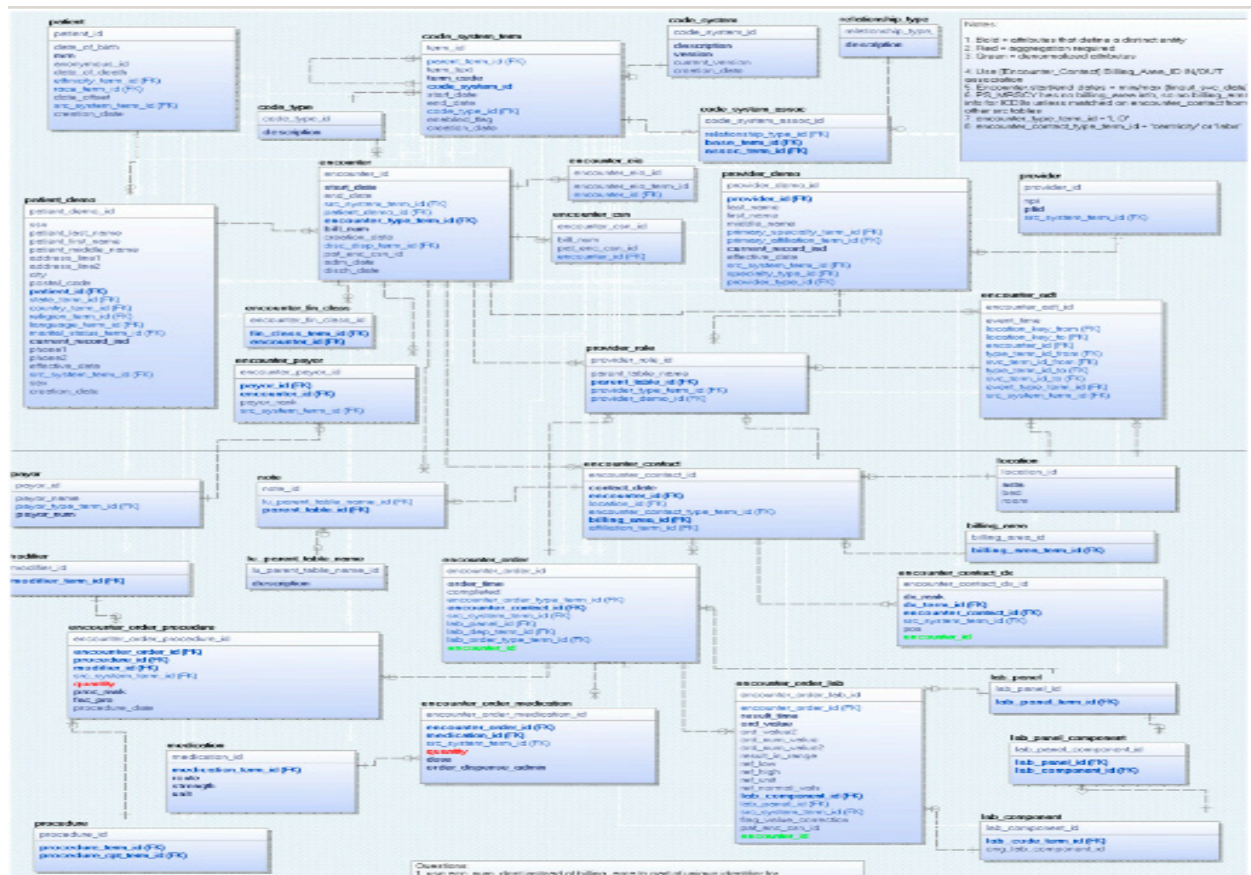
# Agenda

- What is the CRDW?
- How do you build a cohort?
- Questions?

# CRI: The Clinical Research Data Warehouse (CRDW)

- CRDW is a repository of University of Chicago medical data dating back to 2006.
- The CRDW team brings together data from disparate sources such as Epic, Centricity billing, Cancer Registry, LabVantage and REDCap to create cohesive datasets for research.

# CRDW is a Physical Database



# CRDW is a process

More than just  
hardware and  
software



The fastest hardware and the latest and greatest software is only a **small part of that process**

Without good processes in place for managing data, requesting data, governance of data, consistent standards, and quality control, the best hardware and software will do one thing: **serve up bad data faster**



# What is IN the CRDW?

- The **most commonly-requested data elements** required to answer research questions are the following:
  - Patient Demographic Info
  - Encounter Info (Encounter type, Admit Date, Discharge Date, etc.)
  - Diagnoses: ICD9/10
  - Procedures: ICD9/10, CPT
  - Flow Sheets: Vitals, Respiratory, Physical Assessment, etc.
  - Medications: Outpatient and MAR
  - Labs
  - ADT: (Admission, Discharge, Transfer)

# The Clinical Research Data Warehouse (CRDW)

## The UChicago Clinical Research Data Warehouse

|             |             |
|-------------|-------------|
| Patients    | 850,243     |
| Diagnoses   | 23,959,858  |
| Encounters  | 9,568,899   |
| Labs        | 166,313,565 |
| Medications | 8,834,525   |
| Procedures  | 47,731,079  |
| Providers   | 70,941      |





# What about notes?

- Notes are available in bulk and we can provide as part of a data request
- However, defining a cohort or doing additional filtering/logic using info from within the note is difficult, time-consuming, and expensive using Natural Language Processing
- Not impossible, but can be cost-prohibitive



# Output from CRDW: 2 Flavors

- Static Data Set: 1x data extraction
  - Example: Finding a cohort of patients that match on a specific set of demographic, clinical, and billing variables.
- Dynamic Data (AKA Affiliated Data Mart): regularly updated data
  - Example: Bringing together a registry of patients maintained in REDCap w/ clinical data from Epic/Clarity, billing data from Centricity, and cancer data from the Cancer Registry

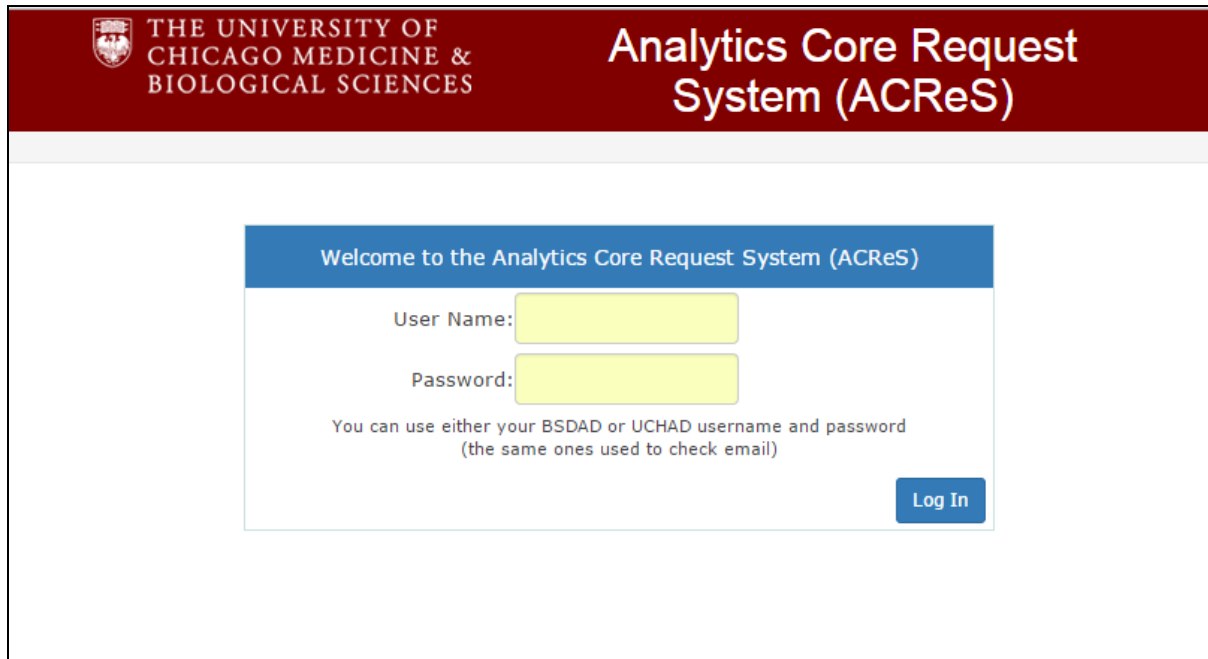
# How do I request data?

# How Do I Request Data? ACReS

- Analytics Core Request System
- <https://cri-app02.bsd.uchicago.edu/ACReS>

# Step 1: Log into ACRoS Website

- <https://cri-app02.bsd.uchicago.edu/ACReS>



The screenshot shows the login interface for the Analytics Core Request System (ACReS). At the top, a dark red header bar contains the University of Chicago Medicine & Biological Sciences logo and name on the left, and the system title "Analytics Core Request System (ACReS)" on the right. Below the header, a white box contains a blue banner that reads "Welcome to the Analytics Core Request System (ACReS)". Underneath the banner are two yellow input fields for "User Name:" and "Password:". Below these fields is a note: "You can use either your BSDAD or UCHAD username and password (the same ones used to check email)". A blue "Log In" button is positioned at the bottom right of the white box.

# CRDW Spec Document

PI: [REDACTED]  
 Contact: [REDACTED]  
 Title: [REDACTED]  
 Request #: 11242  
 IRB#: [REDACTED]  
 Data Type: PHI

## Cohort Identification:

- Outpatients seen in Heme/Onc
- 4/1/2015-6/30/2015
- Designation of "palliative" intent in treatment plan

Index encounter is the first encounter that meets this criteria.

Data Set Output: Outpatient, Emergency, and Inpatient Encounters from Index through 6/30/2016

## Cohort Info:

- MRN
- DOB
- DOD
- Race
- Gender
- Ethnicity
- Primary Language (as available)
- Religion (as available)

## Encounter Info:

- MRN
- Bill\_Num
- Enc\_EIQ
- Admission\_type (planned, emergent, urgent)
- Adm\_DTTM
- Dis\_DTTM
- Start\_DTTM
- Attending\_Provider
- Visit\_location
- Admit\_location
- Dis\_location
- Fin\_class
- Marital\_status
- Primary\_ICD9\_Dx
- Primary\_ICD9\_Desc
- Primary\_ICD10\_Dx
- Primary\_ICD10\_Desc
- Flag field for ICU admission during encounter

## Diagnosis Info:

- MRN
- Bill\_Num
- ICD9\_Dx
- ICD10\_Dx
- Charlson Comorbidity Score

## Procedure Info:

- MRN
- Bill\_Num
- ICD9\_Px
- ICD10\_Px
- CPT

## Medication Info:

### Anti-neoplastic agents only

- MRN
- Bill\_num
- Med\_name
- Order\_DTTM
- Start\_DTTM
- End\_DTTM
- Given\_DTTM
- DC\_DTTM

## Radiation Therapy:

- MRN
- Bill\_num
- DTTM (of occurrence)

## Notes: Index Encounters

### ECOG score via Natural Language Processing

- MRN
- Bill\_Num
- ECOG score  
(Could also be PS: 0-4)

## Cancer Registry Info:

- MRN
- Date of initial diagnosis
- Primary site
- Date of first contact
- Current treatment

## Time Estimate (Standard; 4-6 weeks):

| Task Description   | # Hrs     |                   |
|--|-----------|-------------------|
| Initial meeting at Office Hours                            | 1         | Not billed        |
| Generate, document, and review data request specifications | 1         | Not billed        |
| Generate SQL queries to pull requested data                | 22        |                   |
| Cancer Registry  | 6         |                   |
| Analysis: NLP  | 10        |                   |
| Create, QA, and deliver sample/final data set              | 2         |                   |
| <b>Billable Hours (\$95/hr)</b>                            | <b>40</b> | <b>\$ 3800.00</b> |

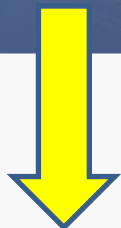


THE UNIVERSITY OF  
CHICAGO MEDICINE

Center for Research Informatics  
Seminar Series

## CRI Resources

- **Office Hours**
  - Tuesdays, Room N161, by appointment 10-4
  - Fridays, Room N161, by appointment 10-12
- **IRB guidance**
  - CRDW specific IRB language
- **Grant application guidance**
- **Semi-self service tools**
  - I2b2
  - [SEE Cohorts](#)
- **Data Storage Solutions**
  - REDCap
  - Bulkstorage



## GET STARTED NOW



### ACQUIRE DATA

Explore clinical data available for research and make a data request.

[Clinical Research Data Warehouse](#)  
[Cohort Discovery](#)



### ANALYZE DATA

We offer high-performance computing and advanced bioinformatics analysis for the most complex datasets.

[Bioinformatics Core](#)  
[Computing Resources](#)  
[CRI Galaxy](#)



### STORE DATA

Our storage is secure, standards-compliant, and backed up daily.

[CRI Data Storage](#)



### MANAGE DATA

Manage studies, surveys, and databases for research.

[REDCap](#)



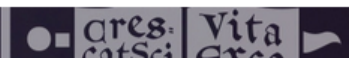
### FIND A CUSTOM SOLUTION

Learn more about the CRI's tailor-made research solutions.

[Custom Applications](#)







## GET STARTED NOW



### ACQUIRE DATA

Explore clinical data available for research and make a data request.

[Clinical Research Data Warehouse](#)  
[Cohort Discovery](#)



### ANALYZE DATA

We offer high-performance computing and advanced bioinformatics analysis for the most complex datasets.

[Bioinformatics Core](#)  
[Computing Resources](#)  
[CRI Galaxy](#)



### STORE DATA

Our storage is secure, standards-compliant, and backed up daily.

[CRI Data Storage](#)



### MANAGE DATA

Manage studies, surveys, and databases for research.

[REDCap](#)



### FIND A CUSTOM SOLUTION


Learn more about the CRI's tailor-made research solutions.

[Custom Applications](#)



# SEECohorts

(<https://seecohorts.cri.uchicago.edu/>)

 THE UNIVERSITY OF  
CHICAGO

Center for  
Research  
Informatics

SEE Cohorts

User name

Password

Log in



## **Contact Information**

Julie Johnson

[jjohnso3@bsd.uchicago.edu](mailto:jjohnso3@bsd.uchicago.edu)



THE UNIVERSITY OF  
CHICAGO MEDICINE

Center for Research Informatics  
Seminar Series