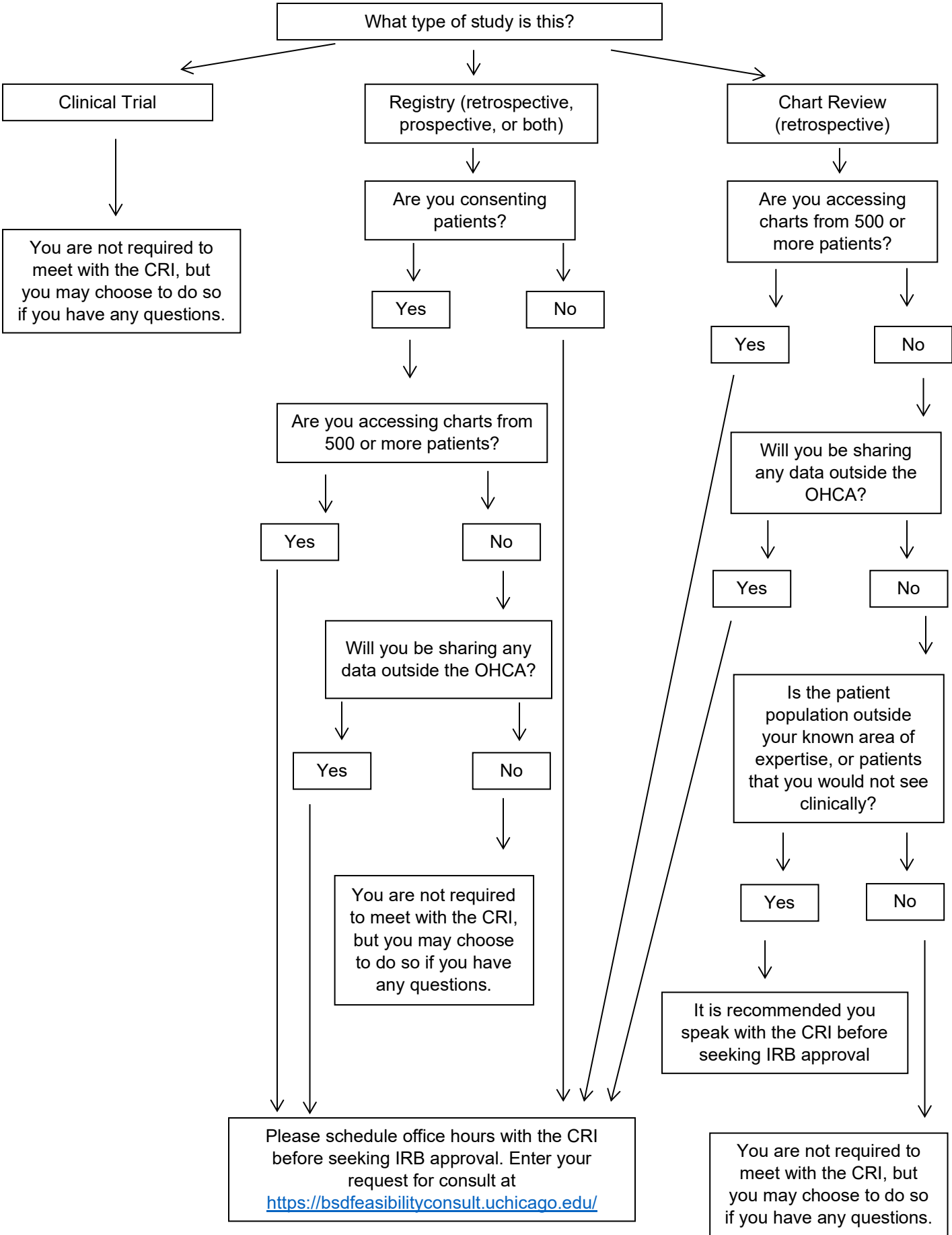


Do I need to contact the CRI about my research project?



Definitions

Clinical trial	A research study in which one or more human subjects are prospectively assigned to one or more interventions (which may include placebo or other control) to evaluate the effects of those interventions on health-related biomedical or behavioral outcomes.
Registry	A compilation of standardized information about a group of patients or subjects who share a condition or experience. Registry may be single site or multi-site. Registry data can be used for a single purpose (e.g. to track outcomes of an experimental drug or device) or re-used as a source for multiple research projects (e.g. to answer different research questions about patients with CKD).
Chart Review	Collection of data from the medical record to answer a specific research question.
OHCA	<p>Organized Health Care Arrangement; the OHCA includes:</p> <ul style="list-style-type: none"> • The University of Chicago Medical Center, including its nurses, residents, other staff, and volunteers, • The University of Chicago Biological Sciences Division and other portions of the University of Chicago in both cases that supports the activities of Health Care including its physicians, nurses, students, volunteers, and other staff, and • UCMC Community Physicians LLC. <p>The OHCA does not include other divisions in the University of Chicago such as Booth.</p>
Prospective	At the time of IRB submission, data is <u>not</u> yet in existence and/or collected in the medical record.
Retrospective	At the time of IRB submission, data <u>is</u> yet in existence and/or collected in the medical record.